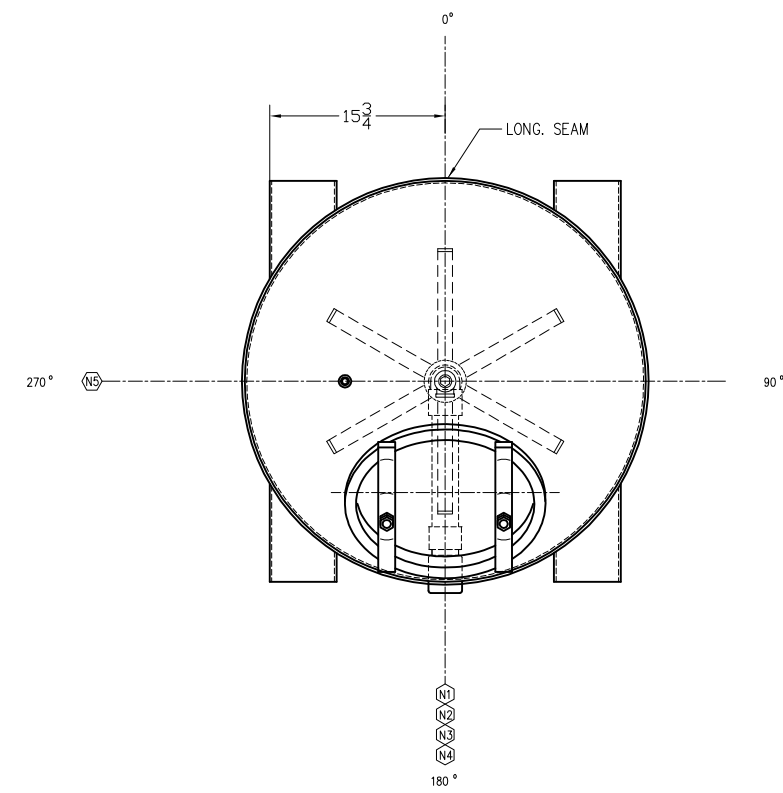
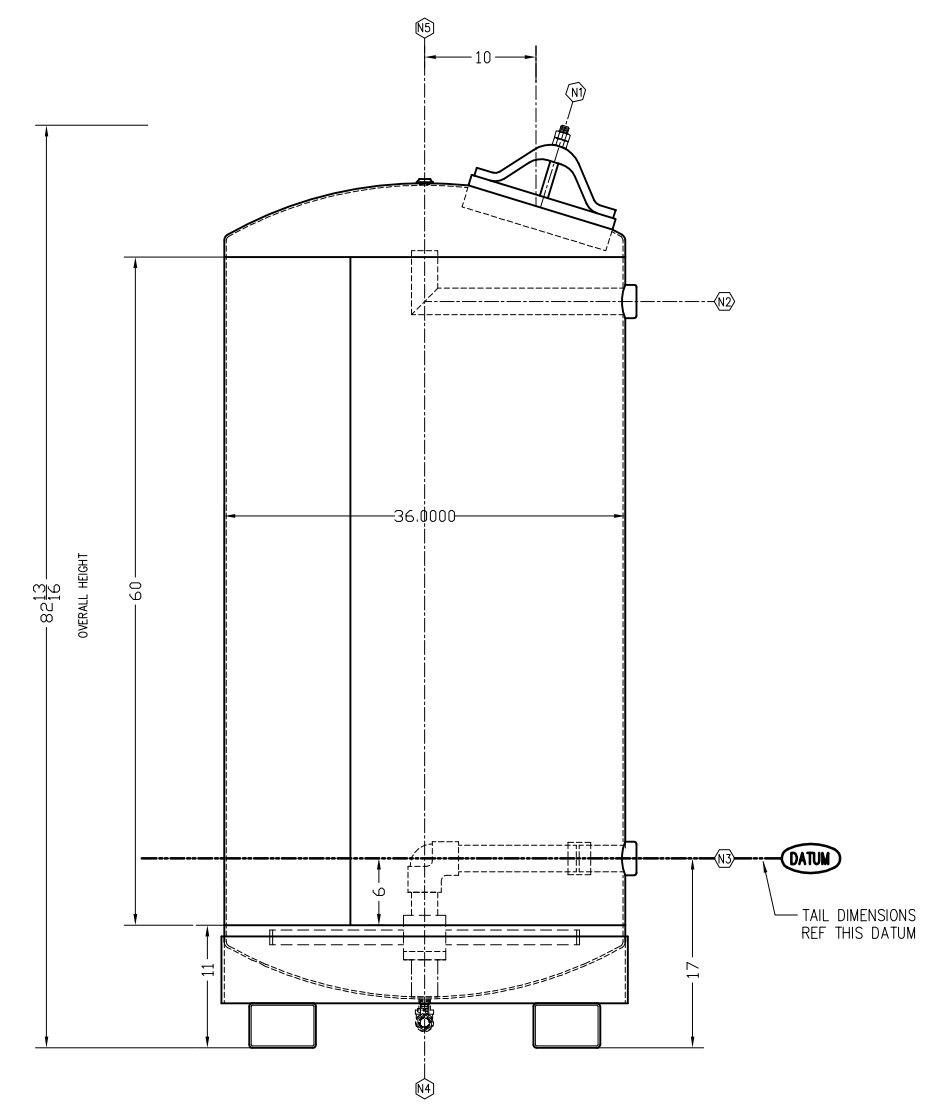


RevNo	Revision note	Date	Signature	Checked



PLAN VIEW
TRUE ORIENTATION



NOZZLE SCHEDULE		
ID	Description	Service
N1	12" x 16" ELLIPTICAL MANWAY w/COVER	Upper bed access with Cover (SA-36), Bolts, Neoprene Gasket
N2	2" MNPT 3000# Coupling	Process Inlet
N3	2" MNPT 3000# Coupling	Process Outlet
N4	1/2" 150# Thrd Tank Flange	Drain w/1/2" Ball Valve
N5	1/4" 150# Thrd Tank Flange	Vent/ Pressure Gauge Port
N6		
N7		

COATINGS SCHEDULE		
Surface	Surface Preparation	Product Specification
Internal - 1	SSPC-SP6	SW Macropoxy 646 6-8 mils DFT
Internal - 2	Inspect	n/a
External - 1	SSPC-SP6	SW Kem Bond Primer 2-4 mils DFT
External - 2	n/a	SW Shercryl (Pallet Tan) 2-4 mils DFT
External - 3	n/a	n/a

NOTES	
Item	Details
Construction	Non-Code Design Pressure: 75 PSIG @ 140 DEG F.
Mtrl's Vessel	Shell: SA-36 Heads: SA-36 Pipe: SA-53 (see nozzle detail for others)
Mtrl's Interls	Hub, Laterals (.012" Slot), Diffuser, Hose: PVC Gaskets: Neoprene Hardware: Plated
n/a	n/a
n/a	n/a
Media	Liquid Phase

Continental Carbon Group

1100 South Service Road, Suite 321
 Stoney Creek, ON L8E-0C5
 Tel: 905-643-7615
 info@continental-carbon.com | www.continental-carbon.com

GENERAL LAYOUT FOR 1,000 LB FOR LIQUID PHASE
 MODEL CCG-1000-T